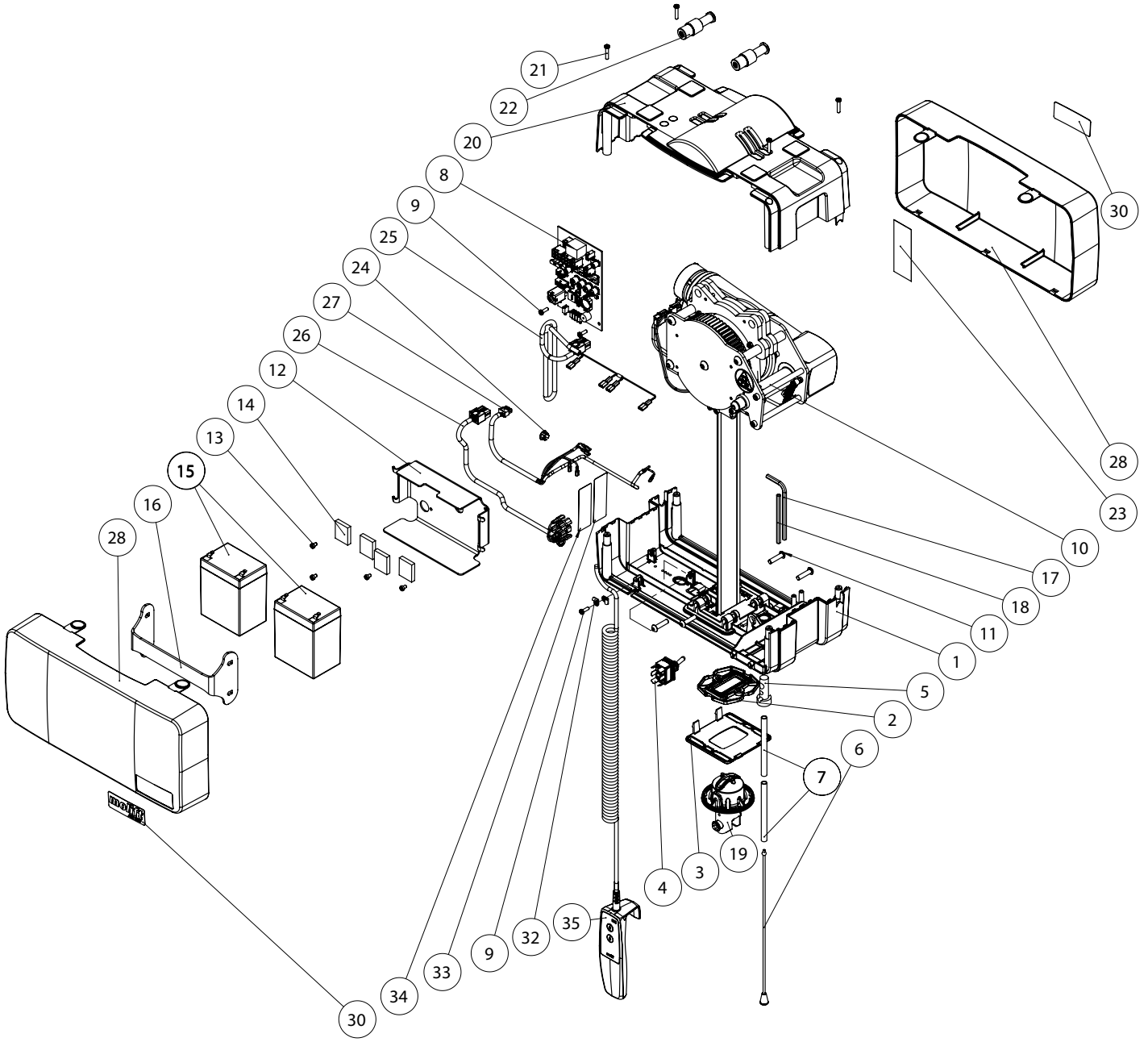
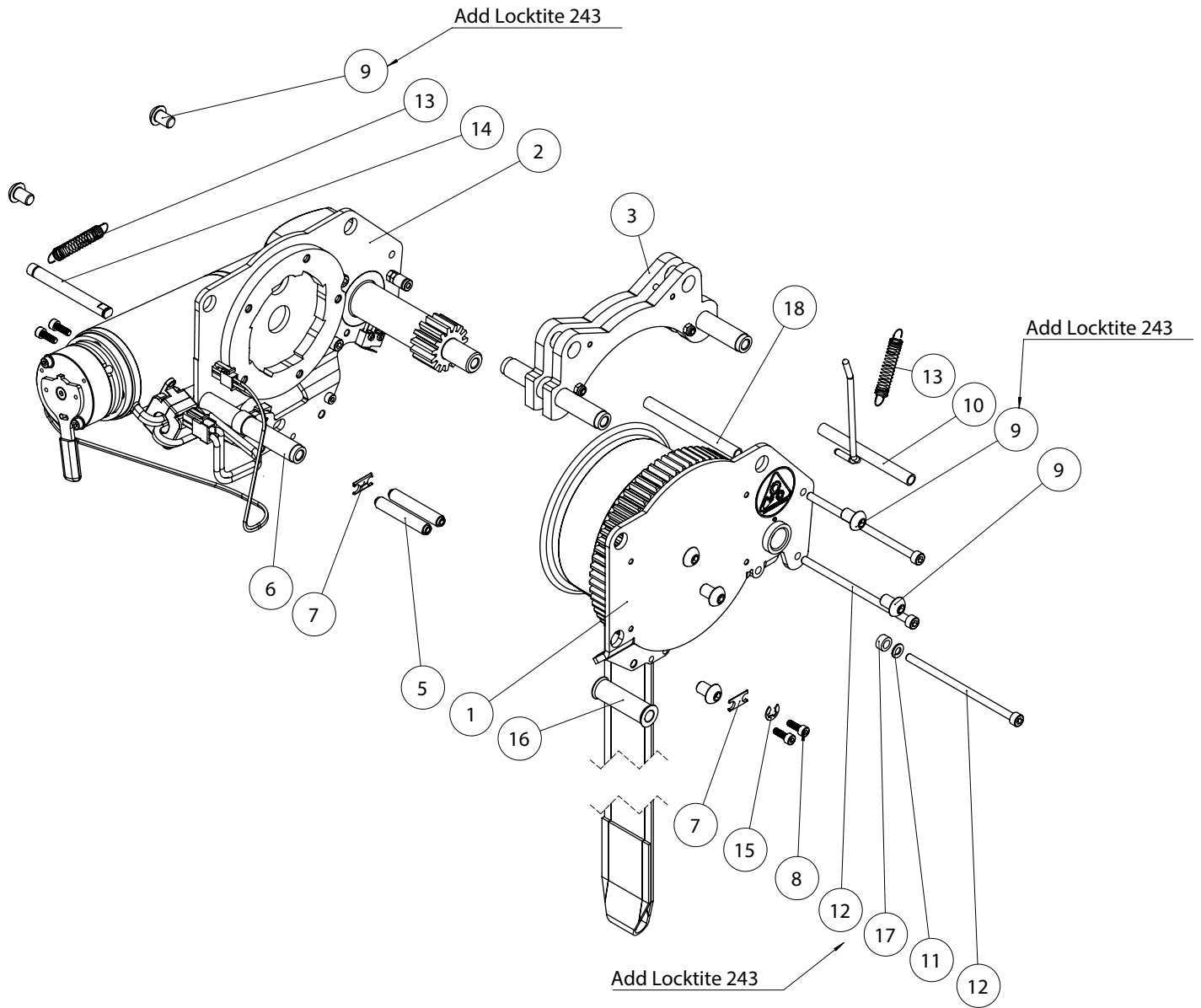


# Air Components



## 2500010 AIR 500 SLA

Pos	Article no.	Description
1	2510444	Lower Cover Assy
2	2510377	Offlead Angle Sensor Assy
3	2510352	Bottom Plate
4	2510343	Emergency Lowering Switch
5	2510003	Emergency Stop Knob
6	1101588	Rope
7	2510099	PVC-pipe
8	2540112	Main PCB AIR-350S
9	2920035	Screw Plastic
10	2510378	Motor/Gearbox Assy
11	0920202	Screw, Button Head Socket Cap
12	2510379	Battery Holder
13	1220317	Screw, Socket Thin Cap
14	2920089	Polyurethane Foam Flexible
15	2920007	SLA Battery 12V - 2,9 Ah
16	2510381	Battery Strap
17	2510382	Allen Key
18	2510383	Allen Key
19	2510384	Quick Release for Alu. Spreader bar
20	2510385	Upper Cover Assy
21	1220330	Screw, Reform
22	2510339	Quick Release Unit
23	1100303	Label: Safety Check
24	2510308	Sheet Cover Cap
25	2510357	SLA-Battery Cable
26	2510358	Emergency Lowering & Stop Cable
27	2510364	Sensor Cable
28	2510386	Side Cover
29		
30	2510423	Label: Air 500
31		
32	1101432	Wire Clamp 4,8mm
33	2510448	AIR 500 SLA Productlabel 26500-1
34		Serial No. Label 26500-2
35	2530002	Hand Control 2- button with Charging 10-Pin



**2510378 Motor Assy Molift Air 500**

Pos	Article no.	Description
1	2510400	Drum Plate and Drum
2	2510401	Motor Plate Assy
3	2510394	Frame Top
4		
5	2510395	Axle
6	2510392	Pass Bolt
7	2510396	Constrictor
8	1410134	Screw, Socket Head Cap
9	1120506	Screw, Socket Button head

10	2510397	Trigger Arm
11	0228142	Washer Plain
12	2510398	Screw, Socket Head Cap
13	1220194	Extension Spring
14	1220155	Axle for Guiding Drum
15	0920094	Circlip
16	2510399	Guiding Drum
17	1101433	Spacer
18	2510463	Distance Sleeve



## Spare part list

Recommended spare parts to keep in stock for Service personnel.

Article no.	
2540100	Charger AIR 200 / 350
2920007	SLA Battery 12V - 2,9 Ah
2510404	Lifting Belt Molift Air 500
2530002	Hand Control 2 buttons w/charging
2510386	Side Cover
2510385	Upper Cover
2510444	Lower Cover Assy
2510352	Bottom Plate
2510339	Quick Release Unit
1220116	Microswitch
2510345	Offlead Angle Sensor Assy
2540112	Main PCB Molift Air 350 / 500
2510384	Quick Release for Alu spreader bar
2510381	Battery Clamp SLA
2510390	Rubber Cap
1101588	4mm red Polyester/cotton cord
1101587	Knob Red (Cord End)
2510003	Emergency Stop Knob
2510099	Tube 6/8mm red Length 35 cm
2510137	Allen key 90 degrees
2510136	Allen key
2510035	Emergency stop/lowering label
2510340	Service/battery label
1100303	Safety Check (Periodic control) label
1100306	Month/year (Periodic control) label
2510448	Main label 500
2510423	Cover label 500
1220194	Extension Spring