



Domus 4

Pressure Relieving Mattress



24 NRG GROUP®



Domus 4:

Pressure Relieving Mattress

The Domus 4 is a pressure relieving mattress designed to offer high levels of support in both the community and acute settings.

The Domus 4 alternating dynamic mattress system has a simple to use and intuitive weight setting function, enabling the care giver to simply set the mattress up according to the weight of each patient, reducing the risk of incorrect weight settings being entered.

The Domus 4 has a range of features for both patients and caregivers that have been designed to comply with the most stringent infection control guidelines. It is suitable for both the prevention and cure of pressure ulcers in a variety of healthcare environments.

The Domus 4 is a highly versatile and cost effective solution to pressure area care. Its modular construction makes it easy to keep clean and maintain, and it offers a number of features normally only found on much higher specification mattresses.



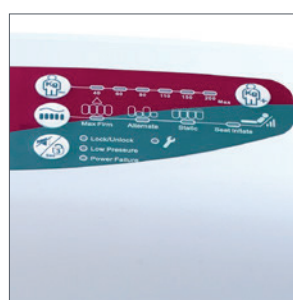
CPR: The CPR toggles are located at the head end of the mattress and are designed to be highly visible and easy to use in an emergency.



Transport Mode: Transport Mode is designed to be simple and easy to use. Its simple click in design also means it is robust and easy to keep clean.



Air Cells: The air cells modular design means maintenance, replacement and decontamination are easy to carry out. Cell on Cell Technology also means that the patient is safely supported throughout the length of the mattress. The centre section cells have a Micro Low Air Loss function to aid with air flow within the mattress.



Head Up Control Panel: The control panel on the Domus 4 is specifically designed to be ergonomic and easy to see without the need for the caregiver to change position when using it.

Product features and benefits

Alternating Therapeutic Mode: Continuously and sequentially inflates and deflates the air cells to allow for pressure redistribution over a ten minute cycle time.

Cell on Cell Design: The cell on cell design offers the patient higher levels of support and comfort throughout the therapeutic pressure relieving cycle.

Seat Inflate Mode: When a patient is in the upright position, the seat inflate mode increases the pressure throughout the mattress in order to better support the sacral area.

Max Firm Mode: Hyper inflates the cells providing a firm surface for moving, handling and nursing procedures. For the safety of the patient the mattress will only stay in Max Firm Mode for 20 minutes and will then revert back to Alternating Therapeutic Mode.

Low Pressure Alarm: Alerts the caregiver if there is a loss of air pressure in the mattress.

Power Failure Alarm: Notifies the caregiver when there is a loss of power if the mattress is unplugged.

Service Fault Indicator: Alerts the caregiver when the mattress needs to be repaired.

Lock Out: Automatically locks the control panel to help prevent the changing of settings inappropriately.

Static Mode: Addresses areas of high contact pressure by redistributing the body mass over a greater surface area through a process of immersion, which is achieved by reducing the mattress pressure by up to one third across the whole surface area of the mattress.

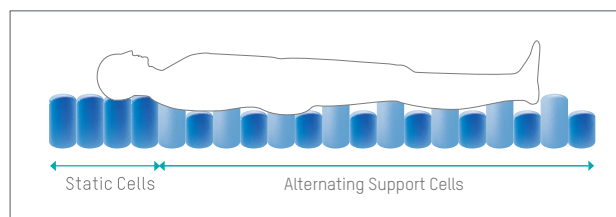
Mattress Cover: The cover is flame resistant to BS 7175 Crib 7 and has a host of features to aid with infection prevention including a 360 degree zip, white underside, vapour permeability, antimicrobial properties and is water resistant. The cover is four way stretch to offer greater pressure relief and comfort levels to the patient, it is also possible to launder the cover in a washing machine.

Mattress Specification	
Mattress Dimensions	: 200x85x20.3cm or 200x90x20.3cm
Mattress Weight	: 7.5 KG
CPR	: Highly Visible CPR Toggles
Weight Settings:	: Six digital weight setting to help set the mattress up quickly and accurately
Cell Structure	: Cell on Cell Technology
Max Firm	: To assist with patient care
Seat Inflation Mode	: Helps support the patient in the upright position
Cable Management	: To allow for safe storage of the power cable
Modular Cell Construction	: For ease of maintenance
Anchoring Straps	: For safe attachment to bed frame
Static Head Zone	
Static Mode	
Non-Slip Base	

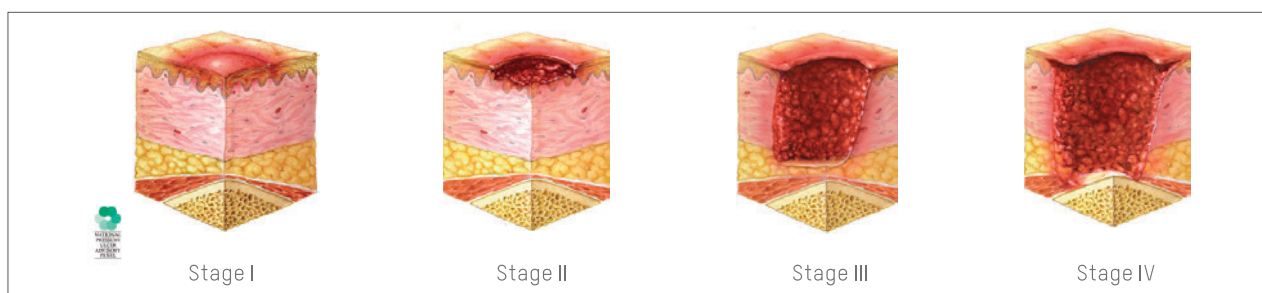
Pump Specification	
Maximum Patient Weight	: 200 KG
Pump Size	: 29x18.5x12.6 cm
Pump Weight	: 2.2 Kg
Cycle Time	: 10 minutes
Voltage	: AC220-240V, 50Hz; AC : 120V/60Hz
ABS Cover	: ABS Flame Retardant Pump Cover
Transport Mode	
Hanging Brackets	
Audible and Visual System Fault Alarms	
Mute Button	
Easy to Identify Power Light	
Pump Lockout	
Fault Indicator	
Extra Long Power Cable	

Cover Specification	
Flame Resistant BS 7175 Crib 7	
360 Degree Zip	
White Underside of Cover	
Four Way Stretch	
Vapour Permeable	
Water Resistant	
Machine Washable	
Antimicrobial	

Alternating Support Surface



Pressure Ulcer Classification Guide



24 NRG GROUP®

www.24nrggroup.com

08452 999 999



Email: info@24nrghealthcare.co.uk

24 NRG Group, Unit 2 Brockington Hall, Bodenham, Hereford, HR1 3HT